

138 HYLAB

HSL SERIES

Lattice Boom Crawler Crane 80 ton (72.6 mt)

- Cutting Edge winch package with wet brake design and matching front & rear drums (line pull)
- 3-piece counterweight system, designed with innovative counterweight removal system
- 40' - 200' (12.19 - 60.96 m) Tubular boom
- Maximum tip height of tubular boom + Jib: 242' (73.76 m)
- HSL Capacity limiter with high visibility color graphic display
- Superior Capacities
- Dual Swing drive provides smooth swing control
- Transport complete crane with base section, drums with rope and self assembly device, less counterweight at under 90,000 lbs.
- Optional 3rd & 4th drum



Link-Belt
CRANES

138 HYLAB HSL SERIES

Lattice Boom Crawler Crane 80 ton (72.6 mt)

- Transport complete crane with base section, drums with rope and self assembly device, less counterweight under 90,000 lbs.
- New winch package with wet brake design
- 3-piece counterweight system, designed with innovative counterweight removal system
- Superior capacities



Exclusive axle extension wings easily swing out for wide gauge working position and quickly and easily swing in for working in tight areas and for transport.



Rope guards and polyamide sheaves

Remote-control operated hydraulic counterweight removal cylinders

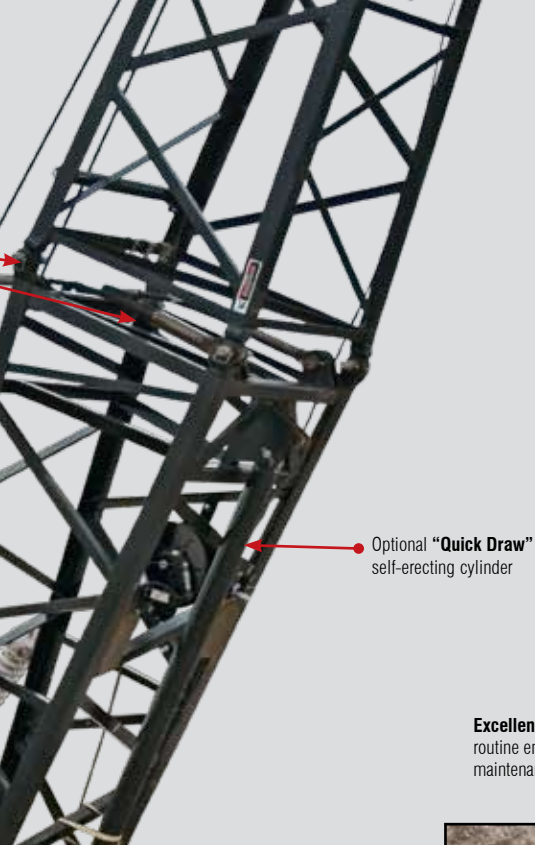
Counterweight "biscuit" design allows for various configuration options and easy transport

Multi-speed travel

Non-slip safety strips, full-length catwalks and sideframe steps provide sure-footed access to the crane upper

Two connection points on boom base. One set of lugs are for cantilever boom. Second set is for assembling machine using the quickdraw cylinder.

- Full contact 36" track shoe design for maximum contact area minimizes ground bearing pressure
- Completely sealed lower, hydraulic cylinder track tensioning and travel limit adjustment
- Sealed (oil-filled) upper & lower rollers, replaceable upper wear bar, compact, high torque final drives



Optional "Quick Draw" self-erecting cylinder



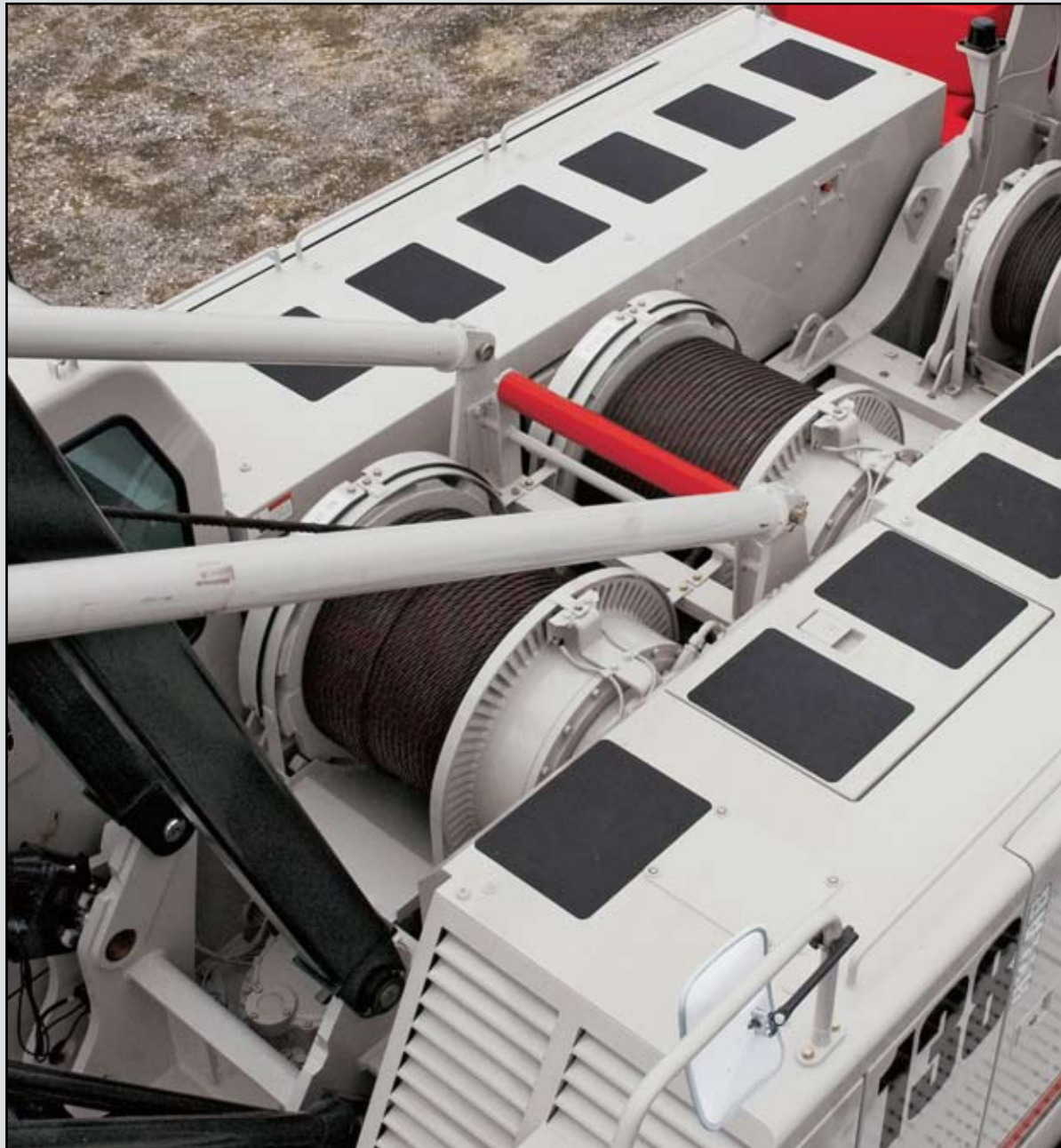
Excellent access for all routine engine and hydraulic maintenance

Heavy-duty power for the most demanding jobs

- Smooth, quite efficient Isuzu power with total horsepower control provides unmatched line speeds under loads, as well as multi function ability
- Matching hoist drums with 7/8" inch rope and 2 operating modes
- Power up power down with automatic brake
- Free fall with Link-Belts exclusive "wet brake design" provides best "feel" and control of any wet brake design provides smooth performance

Options include:

- **Third drum** features controlled free spooling capability for pile driving applications or power up/down
- **Rear mount fourth drum** — High line pull with free fall





Highly functional and comfortable cab

- Wide, uncluttered entry
- 18,600 BTU air-conditioning
- 19,000 BTU hot water heating
- Six-way adjustable seat
- Easy-to-read backlit gauges
- Adjustable armrest console with pilot-operated single-axis controls
- Hydraulic pilot controls for variable hoist, swing and travel performance
- Variable hydraulic output from main pumps controlled by variable hand throttle for infinite control
- Fingertip high speed hoist button for front and rear drum
- Low-effort hydraulic pedals with minimal range of motion can remain latched for power up/down operation
- Full function rated capacity limiter monitored by load sensing via boom hoist mounted load cell
- HSL capacity limiter with high visibility color graphic display

Outstanding standard features

- **Dual swing drives** provide smooth swing control
- **Full length fold up catwalks** on both sides of the upper house
- **Left and right side access points** offers maximum accessibility



138 HSL attachments are versatile and strong

Tube boom

- 40' - 200' (12.19 m - 60.96 m) heavy-duty tubular boom
- Maximum tip height tube boom & jib 242' (73.76 m)

Angle Boom

- 40' - 150' (12.19 - 45.72 m)
- Maximum tip height of angle boom + jib 204' (62.18 m).

Fixed Jib

- 30' - 60' (9.14 - 18.29 m) tubular jib
- Offset angles at 5°, 15° and 25°

Auxiliary 5' tip extension

- Designed to use in place of jib to provide clearance between working hoist lines
- Maximum capacity is 9 ton (8.16 mt).



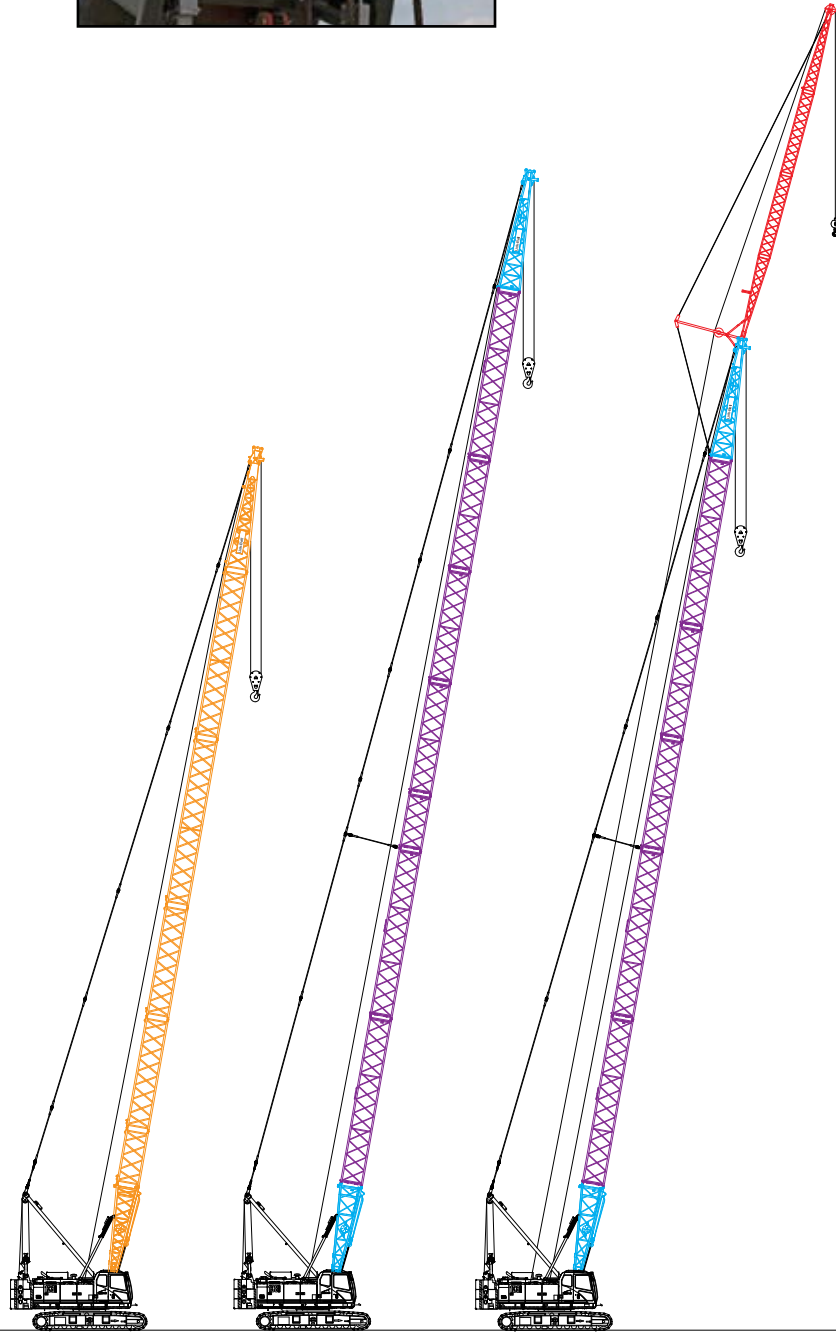
The boom top section features **heavy duty polyamide sheaves** and standard **pin-on points** for attachment of options such as a fixed jib, tip extension and adapters for universal pile driving leads. **Narrow head machinery** allows pendants to rest on top of boom extensions.

In-line boom suspension load cell, standard with anti-two block system for both front and rear drum.

Optional pile driving lead adapter, extended head shaft for hanging leads, three sheave idler to separate load lines



↑ **Double tapered connecting pins** allow installation/removal from outside of boom. Boom connecting pins store in picture frame of boom extensions for transport.



40 - 150 FT
MAIN ANGLE BOOM

40 - 200 FT
MAIN TUBE BOOM

40 - 180 FT
MAIN BOOM WITH
30 - 60 FT OFFSET JIB



Counterweights lower completely to the ground

Transportability and assembly

- Main load transports with crawlers, rope and base
- Transports in 3 loads total
- 3-piece counterweight system is designed for easy handling and blended load-outs
- Innovative counterweight removal system — hydraulic counterweight cylinders remain with counterweight to reduce base machine transport weight
- Standard left and right catwalks easily fold up for transport
- Lift Hooks in base standard

“Quick Draw”

Quick draw single hydraulic cylinder mounted in boom base section is used for self-assembly and disassembly — no need for a helper crane or special rigging block — includes lifting sling — option



Simple lever action disengages counterweight pins from upper



Link-Belt
CRANES

Lexington, Kentucky
www.linkbelt.com

© Link-Belt is a registered trademark. Copyright 2009. All rights reserved. We are constantly improving our products and therefore reserve the right to change designs and specifications.

Litho in U.S.A. 11/09 578 #4369 (supersedes #4347)