

# 218 HYLAB

## HSL SERIES

- Transport complete crane with base section, drums with rope and self assembly device, less counterweights at under 100,000 lbs (45 360 kg)
- Rated capacity limiter with full color graphic display
- Powerful winch package with wet brake design
- 7-piece counterweight system design with innovative counterweight removal system
- Superior capacities
- Optional attachments:
  - Angle boom
  - 5' auxiliary tip
  - Offsettable jib
  - Luffing attachment



**Link-Belt**  
CRANES

*Unit shown in luffing configuration*

# 218 HYLAR<sup>D</sup> HSL SERIES

## 110 ton (99.97 mt) Lattice Boom Crawler Crane

- Transport complete crane with base section, drums with rope and self-assembly device, less counterweights at under 100,000 lbs (45 360 kg)
- 7-piece counterweight system design with innovative removal system
- Latest rated capacity limiter with color graphics
- Cutting edge winch package with wet brake design
- Superior capacities

Counterweight "biscuit" design allows for various configuration options and easy transport

Pin-on track extender blocks remove for transport

- 9' 9" (2.74 m) retracted gauge
- 14' 2" (4.32 m) extended gauge



Rope guards and polyamide sheaves

Remote-control operated hydraulic counterweight removal cylinders

Multi-speed travel

Sideframe counterweights - 11,000 lbs (4 990 kg) each

Non-slip safety strips, full-length catwalks and sideframe steps provide sure-footed access to the crane upper

Two connection points on boom. One set of lugs are for cantilever boom. Second set is for assembling machine using the quickdraw cylinder.



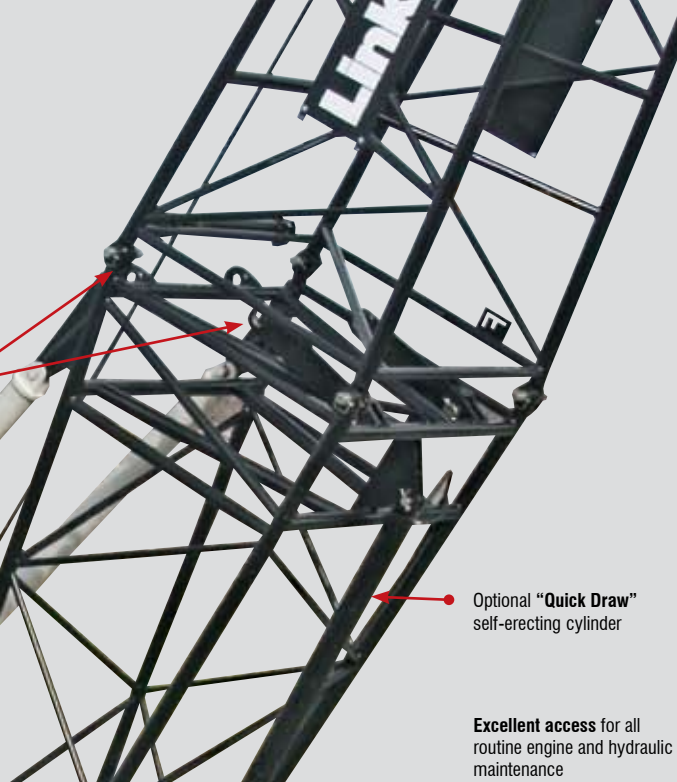
Spring-loaded 90° backstops unpin and rotate, allowing boom to go to 90° for luffing attachment

Link-Belt

- Full contact 36" track shoe design for maximum contact area minimizes ground bearing pressure

- Completely sealed lower, hydraulic cylinder track tensioning and travel limit adjustment, optional track tension system

- Sealed (oil-filled) track rollers with replaceable wear bars, drive planetaries and compact hydrostatic drives



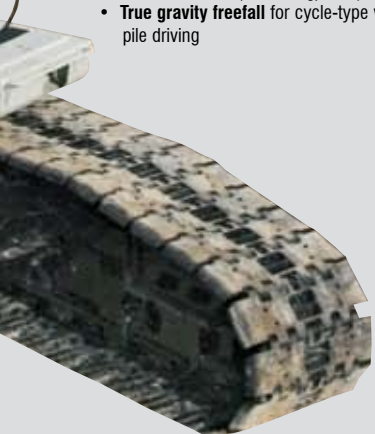
Optional "Quick Draw" self-erecting cylinder



Excellent access for all routine engine and hydraulic maintenance

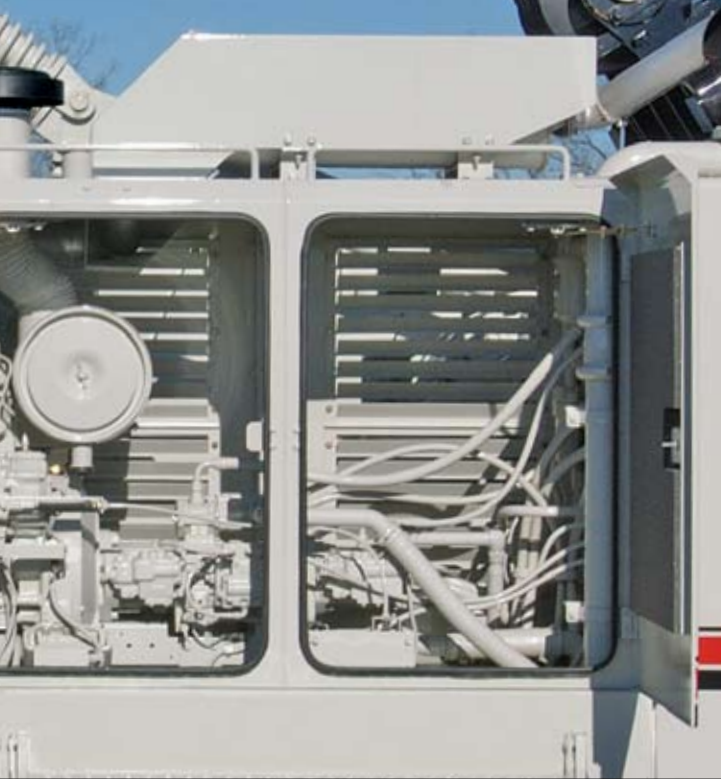
### Heavy-duty power for the most demanding jobs

- Robust engine with **total horsepower control** provides unbeatable line speeds under load
- **Multi-disk wet brakes** for smooth load control. Virtually no friction drag from planetary. Thousands of hours of duty cycle operation expected without maintenance or adjustment
- **High travel torque**
- **Six pump** main hydraulic package provides smooth performance
- **26 mm rope** on front and rear hoists with automatic pawl and grooved lagging
- **Matched front & rear drum** performance with 44,565 lbs (20 214 kg) line pull
- **True gravity freefall** for cycle-type work, pile driving



#### Options include:

- **Third drum** features controlled free spooling capability for pile driving applications or power up/down as auxiliary hoist line for luffer application
- **Rear mount fourth drum** — identical in specification to main and auxiliary winches



## Highly functional and comfortable cab

- Wide, uncluttered entry
- 18,000 BTU air-conditioning
- 19,000 BTU hot water heating
- Six-way adjustable seat
- Easy-to-read backlit gauges
- Adjustable armrest console with pilot-operated single-axis controls
- Hydraulic pilot controls for variable hoist, swing and travel performance
- Variable hydraulic output from main pumps controlled by variable hand throttle for infinite control
- Fingertip high speed hoist button for front and rear drum
- Low-effort hydraulic pedals with minimal range of motion can remain latched for power up/down operation
- Full function rated capacity limiter monitored by load sensing via boom hoist mounted load cell

## Outstanding standard features

- **HSL capacity limiter** with high visibility color graphic display
- **Multi-disc wet brakes** offer automatic or free fall mode
- **Dual swing drives** provide smooth swing control
- **Full length removable catwalks** on both sides of the upper house

## Luffer ready!

- Conventional boom extensions can be used as **luffing boom extensions**
- **3rd drum optional second hoist line**
- **Rear drum luffing jib hoist**
- **Fold-under** assembly



## 218 HSL attachments are versatile and strong

### Heavy-duty tube boom

- 40' - 230' (12.2 - 70.1 m) heavy-duty tubular boom
- Heavy-duty boom tip
- Maximum tip height of tube boom + jib: 278.6' (84.92 m)
- Conventional boom is also luffing boom

### Fixed jib

- 30' - 75' (9.14 - 22.86 m) fixed jib
- Offset angles at 5°, 15° and 25°

### Heavy duty angle boom

- 45° - 155° (13.72 - 47.24 m)
- Designed for rough application and handling where job site and transportation conditions are less than ideal for tube boom

### Auxiliary 5' tip extension

- Designed to use in place of jib to provide clearance between working hoist lines
- Maximum capacity is 18.5 tons (16.78 mt)

### Luffing boom attachment

- Maximum luffing attachment: 140 ft + 140 ft (42.7 m + 42.7 m)
- 283 ft (86.26 m) maximum working height
- 208 ft (63.40 m) maximum working 360° radius
- Working angles of 90°, 85°, 80°, 75°, 70° and 65°
- Luffing cap and fan post assembly transports as one piece



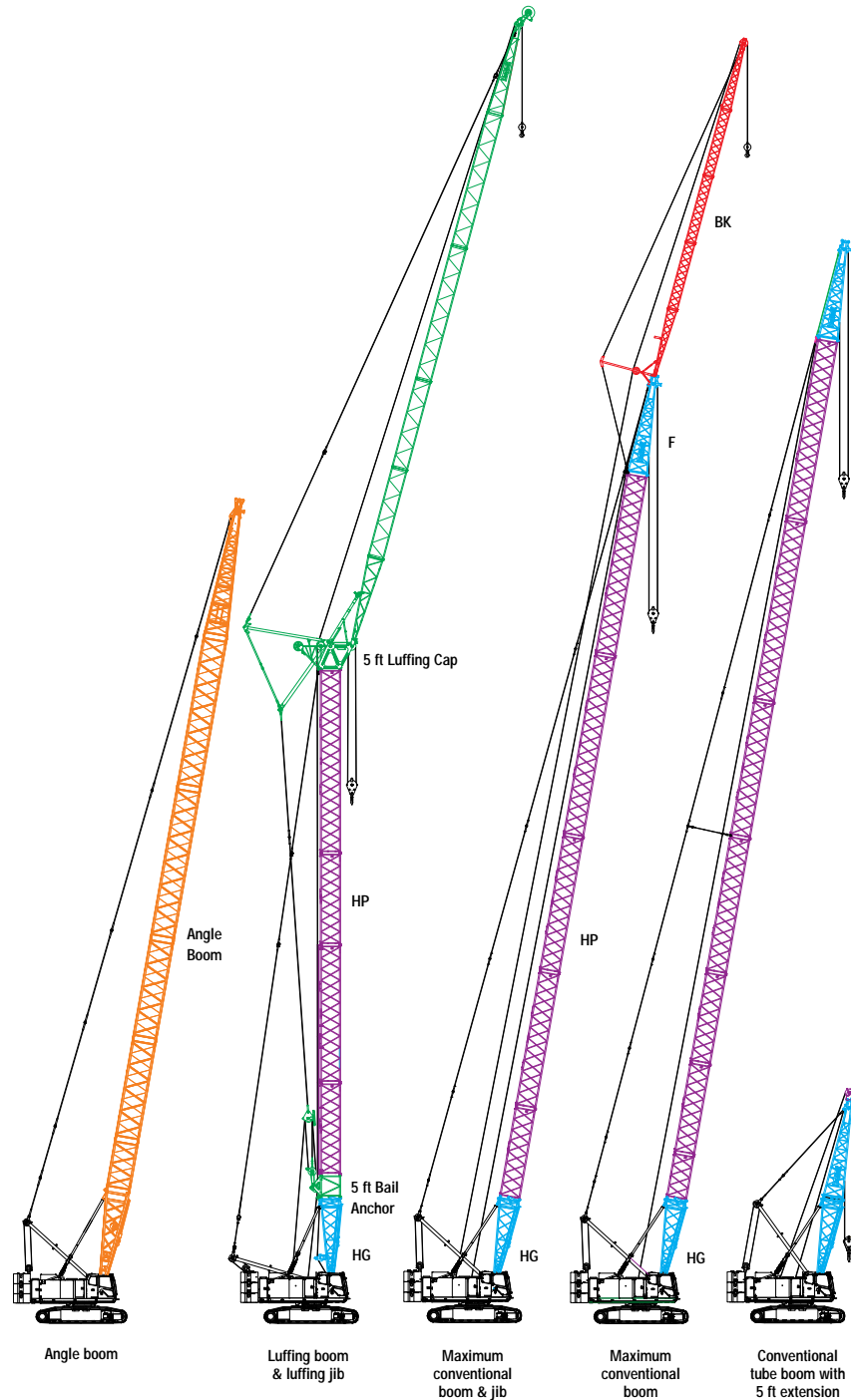
The boom top section features **heavy duty polyamide sheaves** and standard **pin-on points** for attachment of options such as a fixed jib, tip extension and adapters for universal pile driving leads. **Narrow head machinery** allows pendants to rest on top of boom extensions.

**In-line boom suspension load cell**, standard with anti-two block system for both front and rear drum.

Optional pile driving lead adapter, extended head shaft for hanging leads, three sheave idler to separate load lines



↑ **Double tapered connecting pins** allow installation/removal from outside of boom. Boom connecting pins store in picture frame of boom extensions for transport.

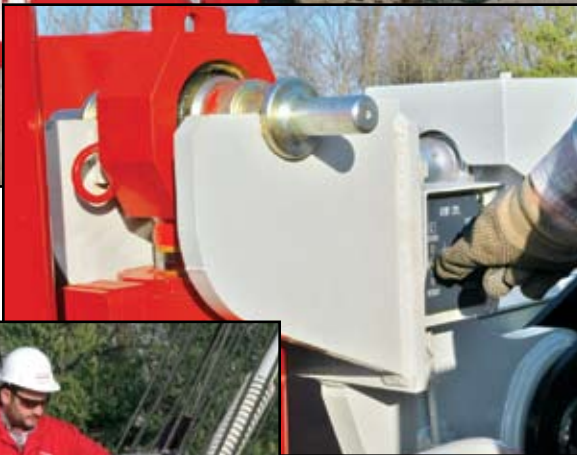




Counterweights lower completely to the ground

→ Counterweight removal control station

↓ Counterweight cylinders remain with counterweight for transport



## Transportability and assembly

- Transports with crawlers, rope and base — 99,960 lbs (45 341 kg)
- Transports in 4 loads total
- 7-piece counterweight system is designed for easy handling and blended load-outs
- Innovative counterweight removal system — hydraulic counterweight cylinders remain with counterweight to reduce base machine transport weight
- Counterweight removal control located at top of counterweight. Ladder included to access control station. Platform provides optimal viewing of counterweight assembly/disassembly
- Pendants can be stowed on boom extensions for transport
- Standard left and right catwalks easily remove for transport

## Optional “Quick Draw”

Quick draw single hydraulic cylinder mounted in boom base section is used for self-assembly and disassembly — no need for a helper crane or special rigging block — includes lifting sling



**Link-Belt**  
CRANES

Lexington, Kentucky  
[www.linkbelt.com](http://www.linkbelt.com)

® Link-Belt is a registered trademark. Copyright 2007. All rights reserved. We are constantly improving our products and therefore reserve the right to change designs and specifications.

Litho in U.S.A. 7/07 375 #4333 (supersedes #4320)